

DHIS Analysis Report (May 2020)

Directorate General Health Services, Punjab (MIS Cell)
24-Cooper Road Lahore
Tel: [+92-99200990]

Email: Hmispb@yahoo.com

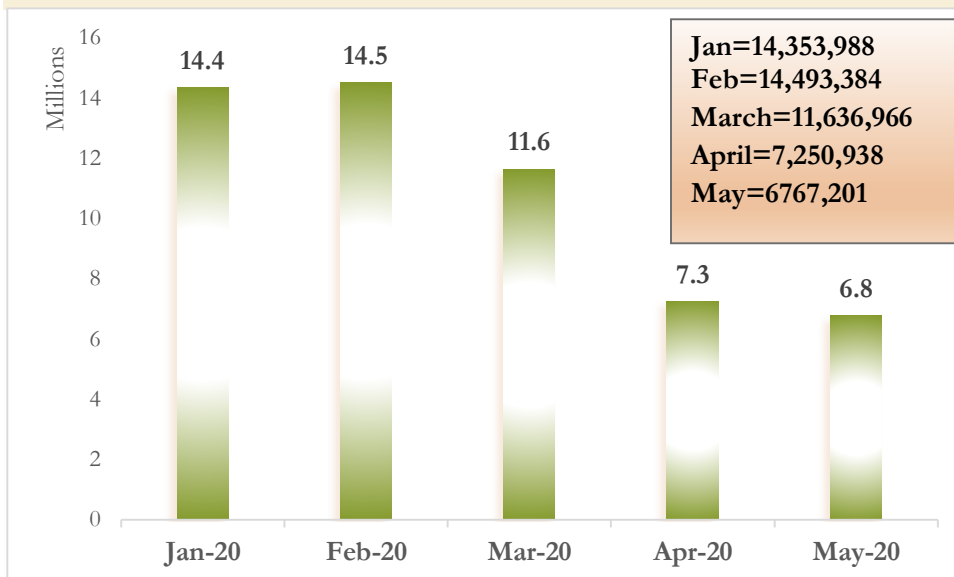


KEY HIGHLIGHTS

Due to pandemic COVID-19, there is a clearly decline observed in healthcare services that are being reported in DHIS by Health facilities including Teaching Hospitals, DHQ, THQ, Civil Hospitals, RHCs, BHUs, MCHC and Dispensaries. The OPD (Out Patient Department) of THOS (Teaching Hospitals) were closed by the end of March. Total OPD visits in January & February were 14 Million, but from March (11.6 Million) OPD is decreased to 6 Million in May 2020. This shows there is a decrease of 41.3% in OPD for the month of May as compare to the month of March 2020.

Similarly, a major decline is observed in rest of the major indicators that are being reported in DHIS i.e. ANC-I, Deliveries, Family planning visits, Medicine Stock out and other indicators.

OUT PATIENT DATA



Total OPD Visits

The figure shows a graphical representation of OPD visits (New + Follow Up) for first five Months of 2020.

Total OPD visits in January 14 million, February 14.5 million and March were 11.6 million whereas, in April and May there were observed only 7M and 6.8M respectively. This shows there is a decrease of 41.3% in OPD for the month of May as compare to month of March 2020,

due to discontinue of OPD in THOS (Teaching Hospitals) in Punjab province by the end of March.

EPIDEMIC TOP FIVE DISEASES

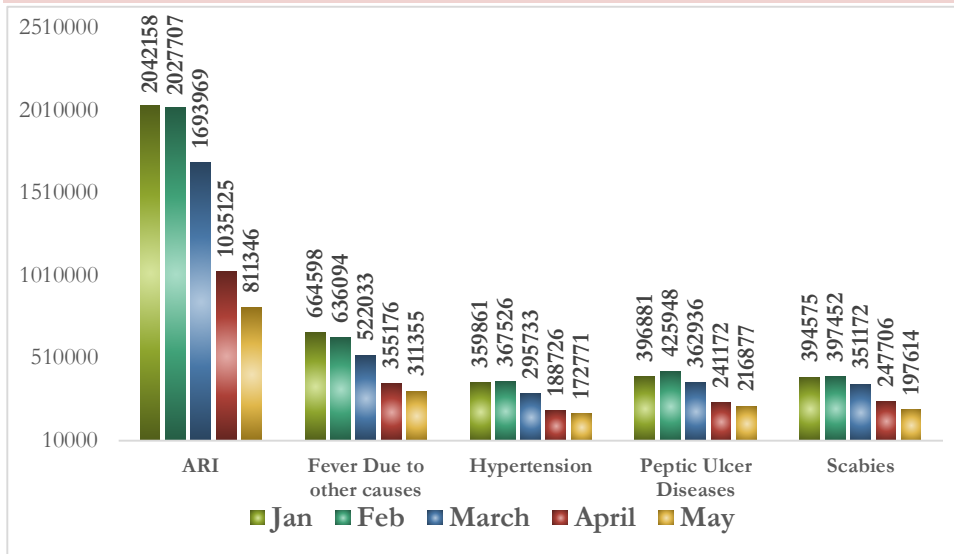
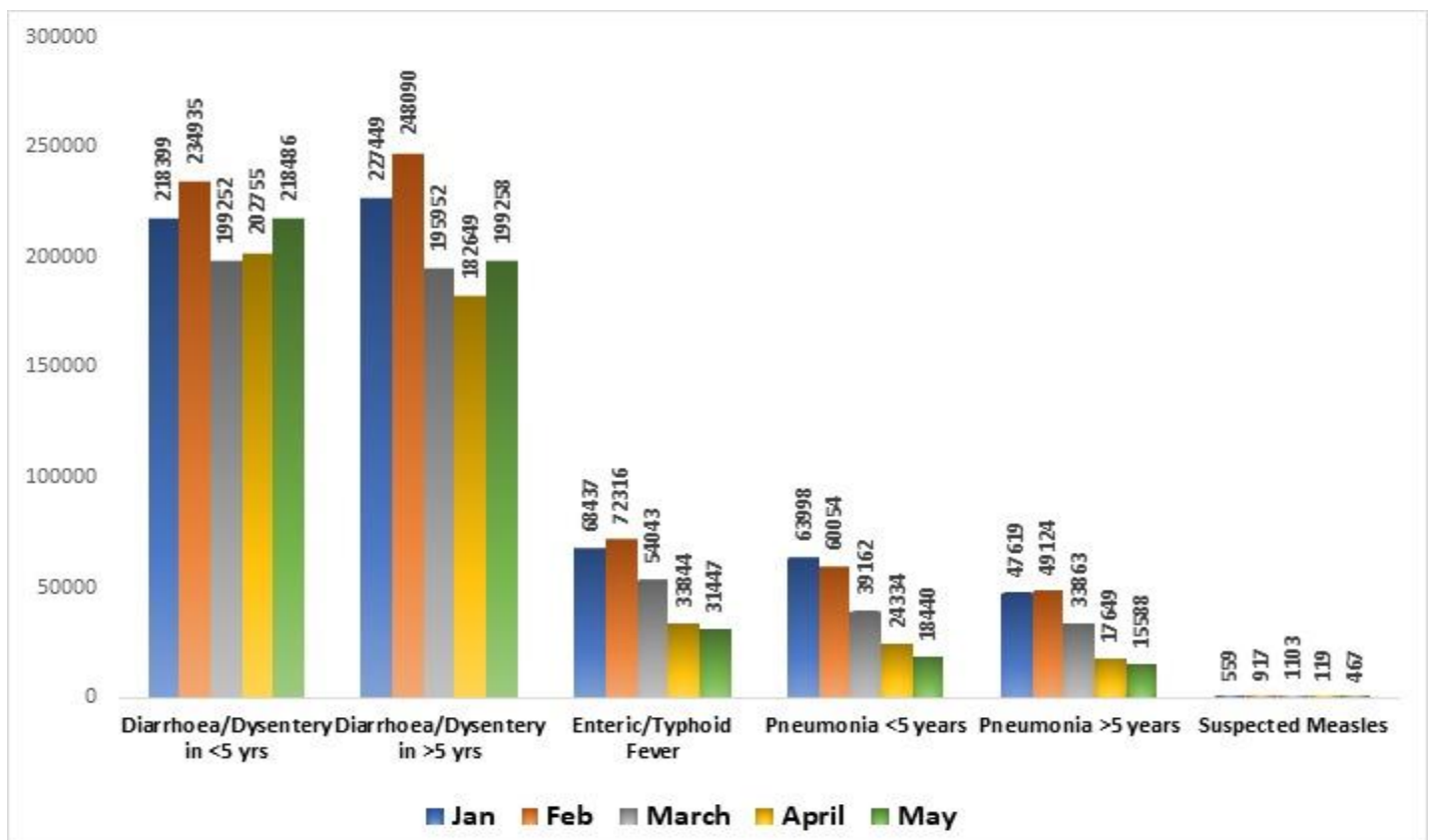


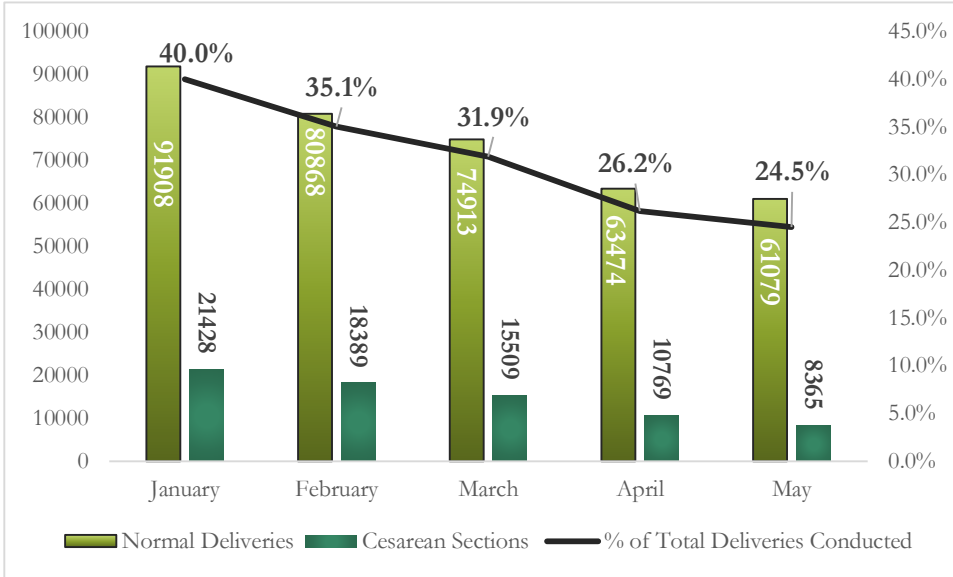
Figure shows the number of patients of top five epidemic diseases in Punjab Province for the month of January to May. The highest number of patients were found in ARI-Acute (Upper) Respiratory Infections in all months. The reported number of patients in DHIS has also decreased due to pandemic COVID-19.

SUSPECTED MEASLES, TYPHOID FEVER, DIARRHEA <5 & >5 YEARS & PHENOMENA >5 & <5 yrs

Graph shows number of patients for the first five months of 2020 i.e. January to May 2020 for Suspected Measles, Typhoid Fever, Diarrhea <5 & >5 years and Phenomena >5 & <5 years. It is observed that Diarrhea <5 & >5 years cases are increased as compared to April 2020.



MATERNAL AND NEONATAL CHILD HEALTH

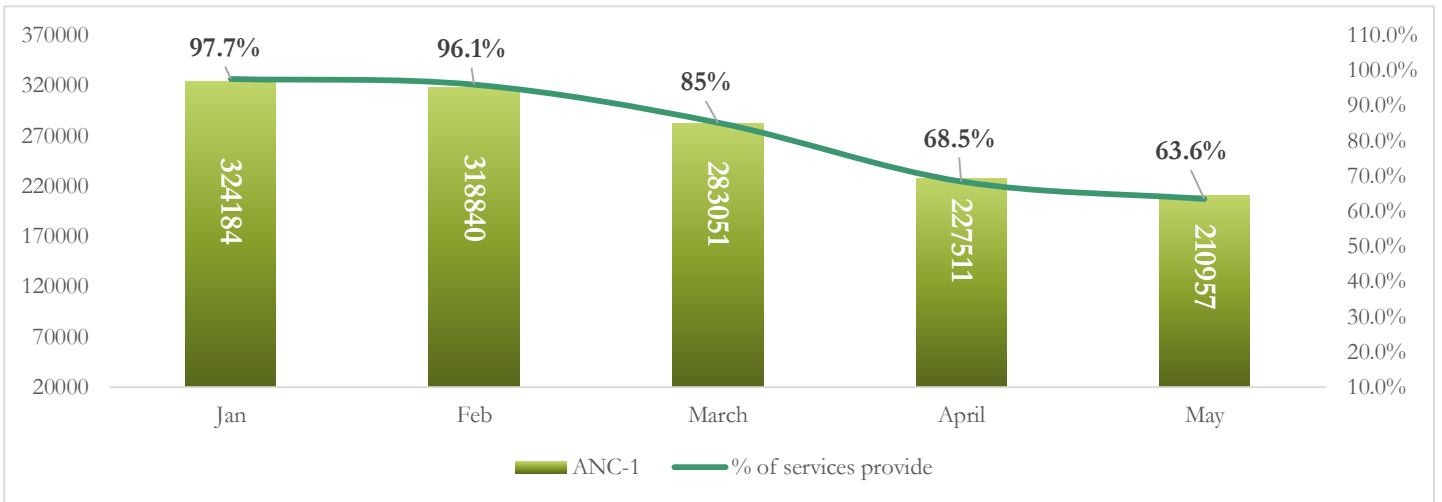


Deliveries conducted in Health Facilities

The figure shows percentage of Total Deliveries conducted in Health Facilities of Punjab for the past five months of year 2020 i.e. January to May. Continues decline can be observed. In May, Percentage of deliveries conducted in health facilities was 25%. Difference of decline due to COVID impact observed from January to May is 38%, a minor decline of 0.06 from April to May 2020 was observed.

The number of C-section performed were also analyzed and it was observed that the highest was in January i.e. 21K and lowest was observed in May i.e. 8K.

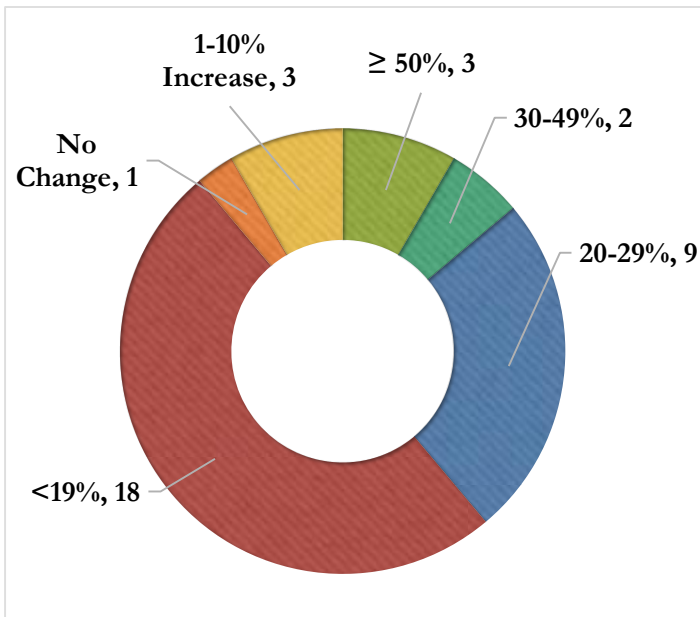
ANC-I VISITS



This numbers are calculated from the expected pregnancies during the year (3.4% of total Population).

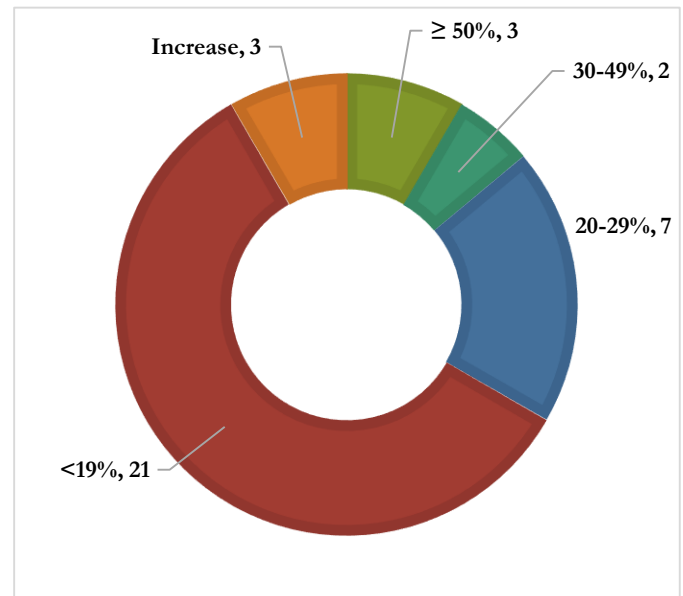
90 above percentage can be seen through graph for the month of January & February. But in March there is 85%, as mentioned earlier that due to COVID-19 THOS (Teaching Hospitals) were closed by the end of March, so directly ANC-I visits decreased and in May the percentage of ANC-I visits is 64%.

ANC-I & DELIVERIES DECLINE PERCENTAGE WITH NUMBERS OF DSTRICTS



Pie chart shows a decline percentage of ANC-I as compare to March, the total numbers of district in percentage categories are shown for the month of May 2020.

Highest number of district's decline is in < 19% category.



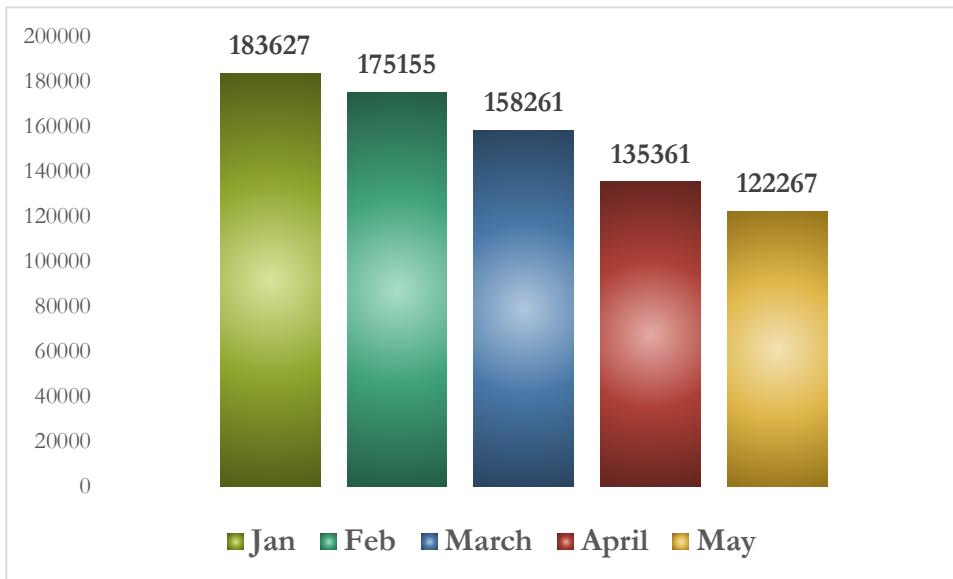
Pie chart shows a decline percentage of Deliveries with the total numbers of district in percentage categories for the month of May as compare to March 2020

Highest number of Districts decline is in <19% Category

ANC-1 Percentage Decline w.r.t March for the month of May 2020

Category	Number of Districts	Name of District
≥ 50%	3	Gujranwala, Lahore, Mianwali
30-49%	2	Gujrat, Shiekhpura
20-29%	9	Bahawalpur,RY khan, Layyah, Faisalabad,Sialkot, Hafizabad,Kasur,Nankana Sahib, Vehari
<19%	18	Bahawalnagar, DG Khan, Muzaffargarh, Rajanpur, Jhang, TT Singh, Gujrat, MB Din, Khanewal, Lodhran, Multan Vehari, Chakwal, Jhelum Rawalpindi, Khushab, Okara, Sahiwal
No Change	1	Chiniot
1-10% Increase	3	Bhakkar, Sargodha, Pakpattan

Deliveries Percentage Decline w.r.t March for the month of May 2020		
Category	Number of Districts	Name of District
≥ 50%	3	Rawalpindi, Gujranwala, Lahore
30-49%	2	Bahawalpur, Faisalabad,
20-29%	7	RY Khan, Layyah, Rajanpur, TT Singh, Gujrat, Hafizabad, Pakpattan
<19%	21	Bahawalnagar, DG Khan, Muzaffargarh, Jhang, Chiniot, Narowal, Sialkot, MB Din, Kasur, Shiekhupura, Nankana Sahib, Khanewal, Lodhran, Multan , Vehari, Jhelum , Bhakkar, Khushab, Sargodha, Mianwali, Sahiwal
Increase	3	Okara, Chakwal, Attock



FAMILY PLANNING VISITS

Figure shows a graphical representation of Family Planning visits for first five months of 2020.

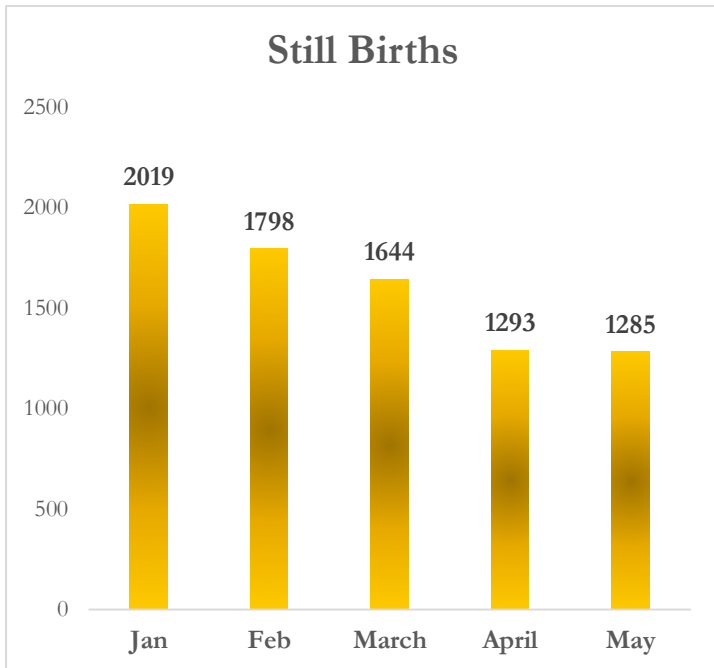
There's a continues decline in every next month from January to May. Number of family planning visits for May is 122k that shows a lowest number of visits from January to April. Which is a decrease of 33% from January visits.

OBSTETRIC COMPLICATIONS

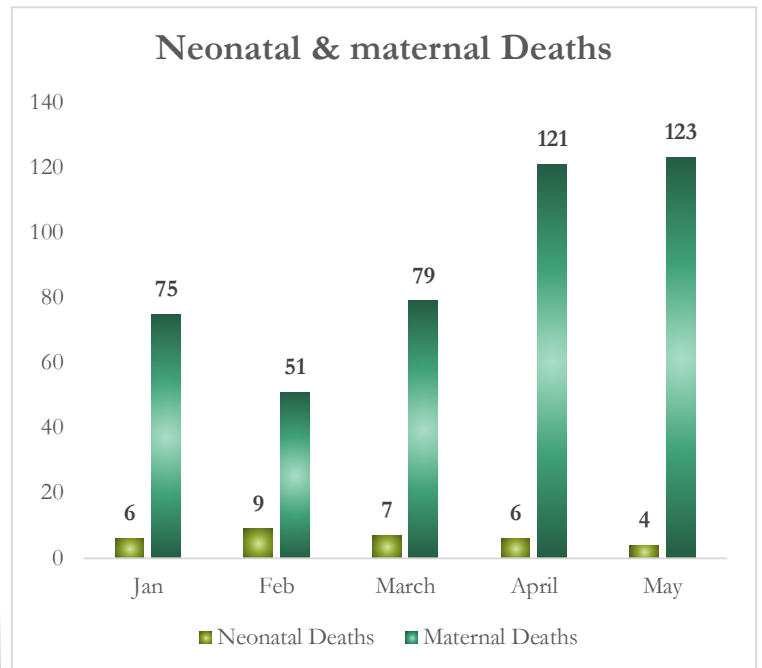
Months	Puerperal Sepsis	Rupture Uterus	Prolonged/ Obstructed Labour	Ectopic Pregnancies	Ante partum Hemorrhage (APH)	Complications of Abortion	Postpartum Hemorrhage (PPH)	Pre-Eclampsia/ Eclampsia
January	351	378	594	357	1,759	1,269	1,031	1,172
February	129	533	462	327	1,451	1,393	1,406	1,110
March	84	144	437	229	1,074	839	832	661
April	90	77	343	165	1,557	690	603	551
May	44	201	278	134	616	736	550	524

Above Table shows the number of Obstetric Complications for the Month of January to May.

Still Birth, Neonatal and Maternal Deaths



Graph shows a number of Still Births in all health facilities for the Month of January to May. It is observed that the number of stillbirths have been decreased by 22% with respect to previous month (March).



Graph shows a number of Neonatal and Maternal Deaths in health facilities. The number of maternal deaths have increased in the Month of March and it ranked highest among past four months, whereas, in may there is a slight decrease in neonatal but a bit increase in maternal deaths.

MEDICINE STOCK OUT

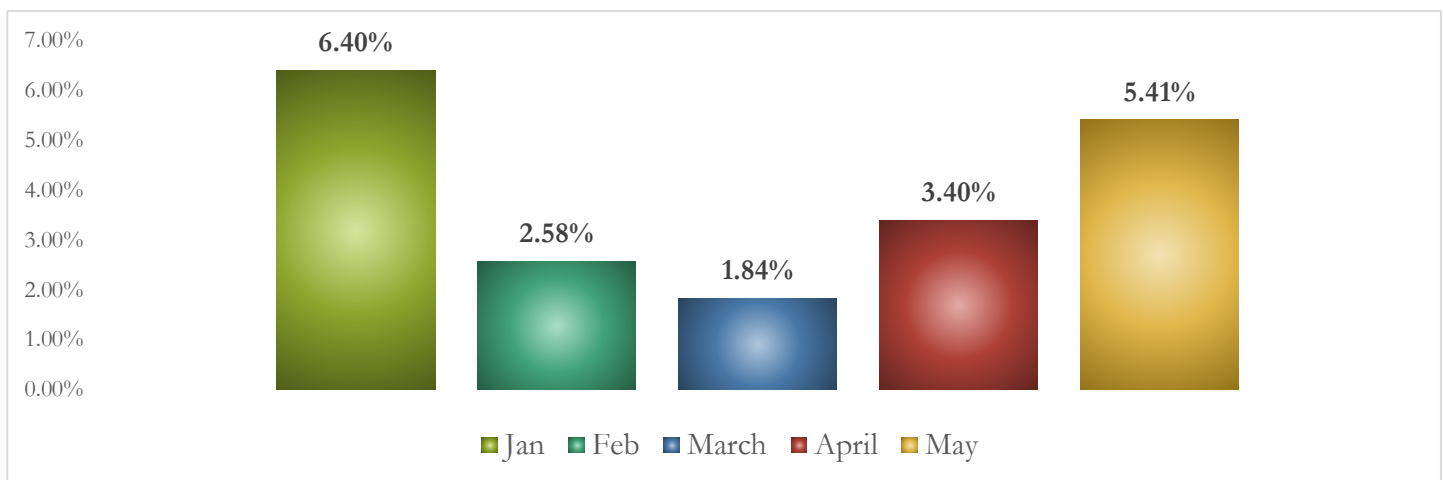


Figure shows a percentage of stock for the month of January, February, March, April and May 2020.

IMMUNIZATION COVERAGE

BCG

Category Percentage	No of Districts	Name of Districts
30-49%	2	Jhang,Chiniot
20-29%	3	Bhakkar, Rajanpur, RYKhan
10-19%	8	Hafizabad, Narowal,Lahore,Lodhran,Okara, Pakpattan,Sargodha, DG Khan
< 9%	20	Chakwal, Jhelum, Gujranwala, Gujrat,Sialkot,Shiekhupura, Nankana sahib, Lahore , Multan,Khanewal, Vehari,Sahiwal, Faisalabad, TT singh, Mianwali, Khushab, Muzaffargarh, Layyah, Bahawalpur, Bahawalnagar
No change	1	MB Din,
1-10% Increase	2	Rawalpindi, Attock

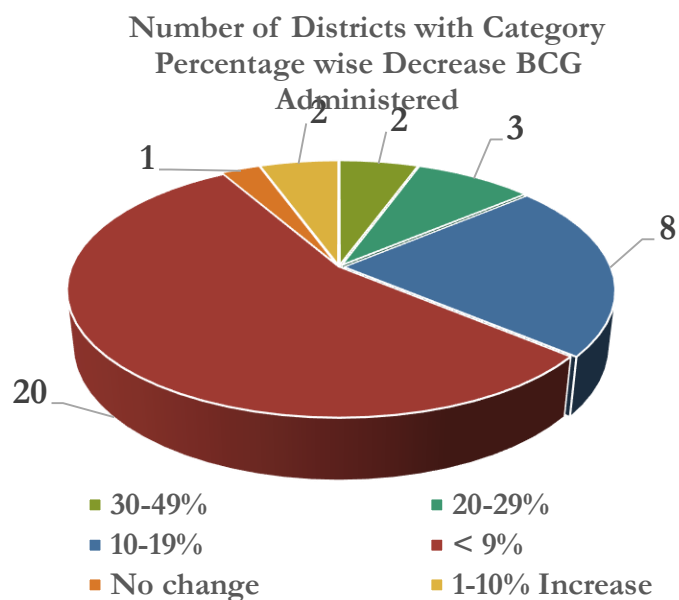


Figure shows a pie chart of BCG (Bacille Calmette-Guerin, a vaccine for tuberculosis (TB) disease) with decline percentage & total number of Districts along with categories of percentage form the Month of January to May 2020. The highest percentage of decline was observed in the category of <9% with number of 20 Districts.

MEASELES-I

Category Percentage	No of Districts	Name of Districts
10-19%	6	Lahore, Lodhran, Pakpattan, Chiniot, TT Singh, RYKhan
< 10%	20	Rawalpindi, Chakwal, Gujranwala, Hafizabad, Gujrat, Narowal, Shiekhupura, Multan, Khanewal, Vehari, Sahiwal, Faisalabad, Jhang, Mianwali, Bhakkar, Khushab, Rajanpur, Muzafargarh, Bahawalpur, Bahawalnagar
No change	2	Attock,Sialkot
1-10% Increase	7	Jhelum, MB Din, Nankana Sahib, Kasur,Okara, Sargidha Layyah
22% Increase	1	DG Khan

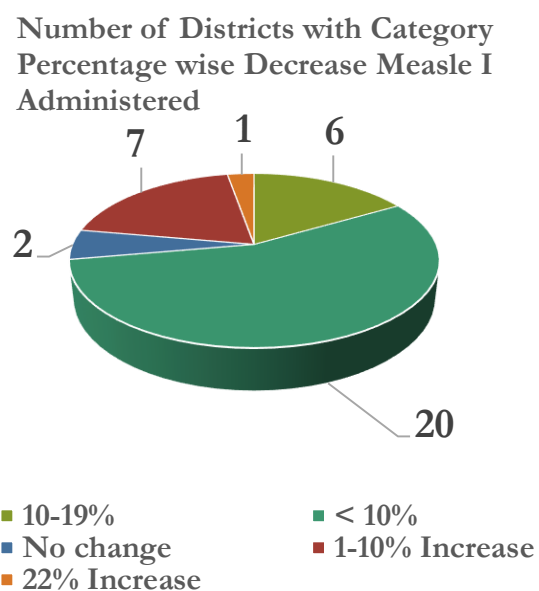
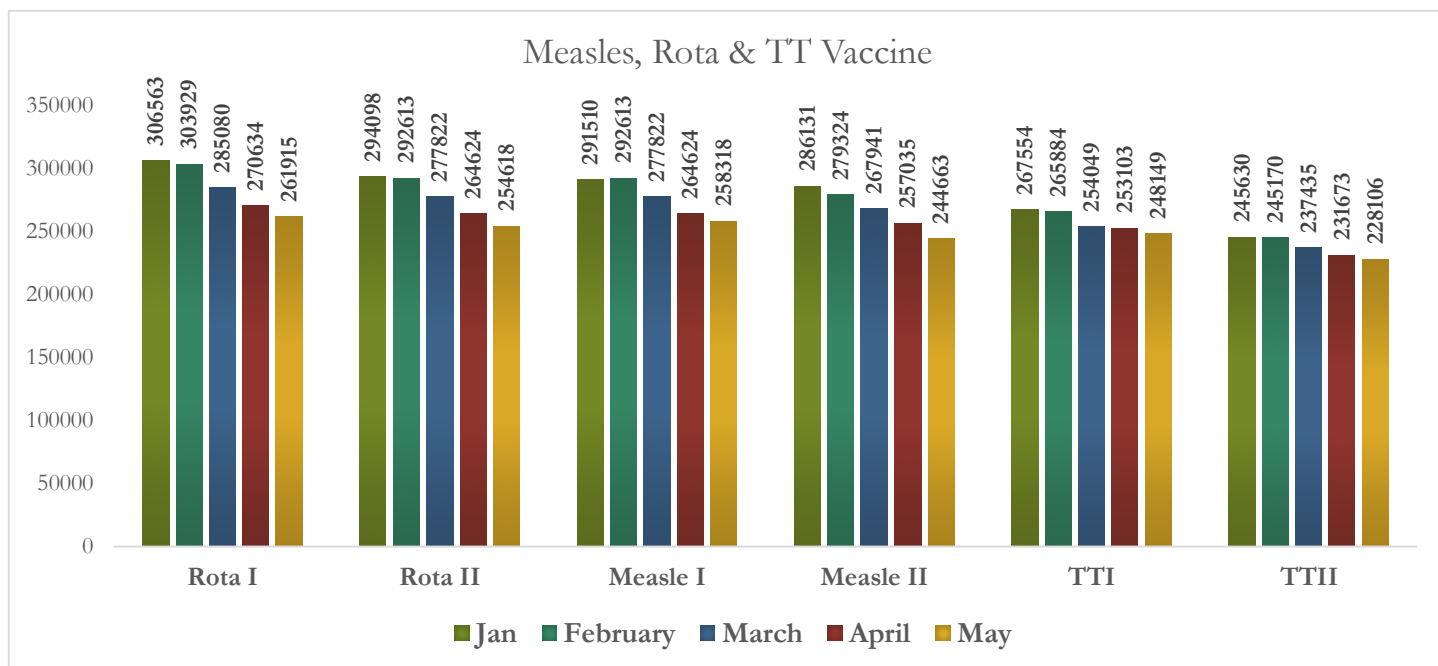


Figure shows a pie chart of Measles-I Vaccine provided from January to May 2020. Decline percentage is shown in chart with number of Districts in categories and district names in table. The highest category of decline was observed in <10% category. This graph shows coverage of vaccines for the Month of January, February, March, April and May. There is slight decline observed in vaccination coverage of Measles, Rota and TT.



In Punjab, From January to May Rota-I and Rota –II have decline of 15% and 13%, Measles-I and Measles-II have decline of 11% and 15% and TT-I & TT-II have decline of 7% as also shown in table.

Vaccine	Decline Percentage from January to May
Rota-I	15%
Rota-II	13%
Measles-I	11%
Measles-II	15%
TT-I	7%
TT-II	7%

This Report would not be possible without the collaboration, guidance, and expertise of **Dr. Haroon Jahangir Khan** (Director General Health Services Punjab), **Dr. Sohail Arshad Rana** (DHS MIS), **Dr. Imtiaz Ahmed Rana** (ADHS-Stat).

The regularly reviews, discussion, and modification of methodological framework used to ensure that the Report meets the most rigorous statistical standards and accurately reflects the state of our Provincial health.

On behalf of MIS team, **Mr. Farooq Ahmed** (CPO), **Ms. Aleena Tahir** (Bio Statistician), we thank to the focal persons of Districts and public health professionals who worked to improve our provincial health for their tireless efforts with timely collaboration. We are better prepared to address the public health challenges of today and tomorrow. They deserve our deepest appreciation.

