

# DHIS Analysis Report (July 2020)

Directorate General Health Services, Punjab (MIS Cell)

24-Cooper Road Lahore

Tel: [+92-99200990]

Email: hmispb@yahoo.com

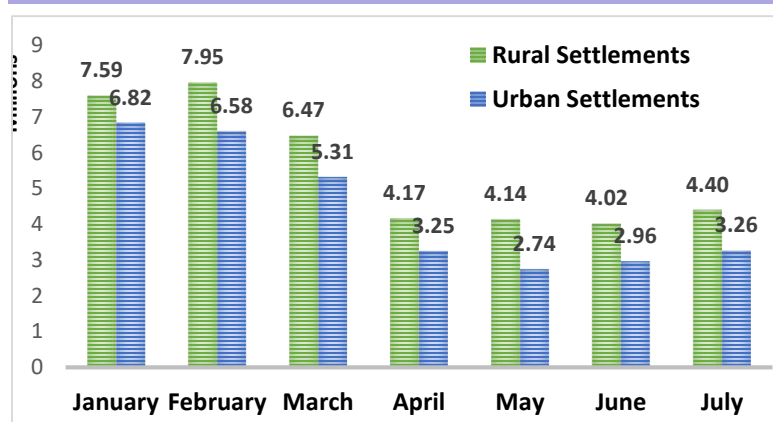


## KEY HIGHLIGHTS

The report of July 2020, discern a very slight rise in healthcare services that are being reported in DHIS by Health facilities including Teaching Hospitals, DHQ, THQ, Civil Hospitals, RHCs, BHUs, MCHC and Dispensaries as compared to June 2020. Due to pitfall of Pandemic COVID-19, there was a clearly decline observed in healthcare services till May 2020. The OPD (Out Patient Department) of THOS (Teaching Hospitals) were closed by the end of March. Total OPD visits in January & February were 14 Million, but from March (11.6 Million) OPD is decreased to 7 Million in June 2020

In July 2020, it is observed that Rural and Urban Settlements have shown an increase of 10 in OPD visits as compared with June 2020. Similarly, increased is observed in rest of the major indicators that are being reported in DHIS i.e. ANC-I, Deliveries, Family planning visits, Medicine Stock out and other indicators for the month of July 2020.

## OUTPATIENT DATA



The figure shows a graphical representation of OPD visits (New + Follow Up) for Rural and Urban Settlements in Punjab. Due to COVID-19 Pandemic, a slight increase in OPD was observed in rural as well in urban settlements for the month of July 2020. Total OPD visits in rural and urban settlements from March to June shows a clear decline.

This shows there is a decrease of 35.5% in OPD for rural settlements and 38.7% in urban settlements for the month of April, 36% & 48.4% for the month of May, 37.8 % & 44.1% for the month of June as compare to month of March 2020, due to discontinue of OPD in THOS (Teaching Hospitals) in Punjab province by the end of March. Whereas, in July there is 10% OPD increase in Rural & Urban Settlements as compared to June 2020.

## EPIDEMIC TOP FIVE DISEASES

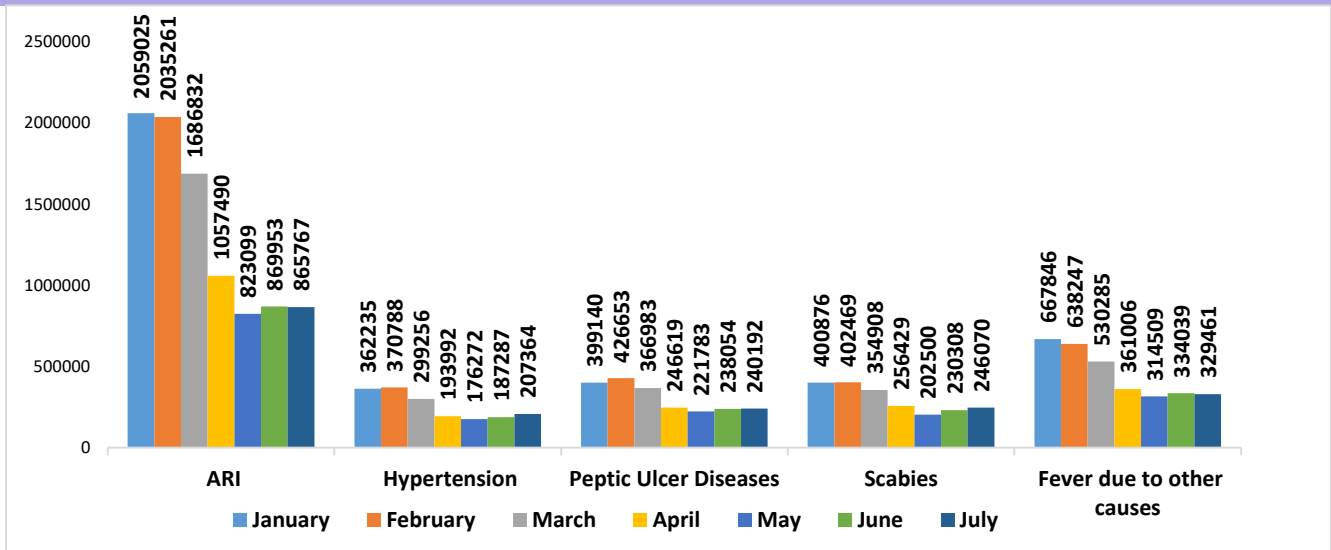
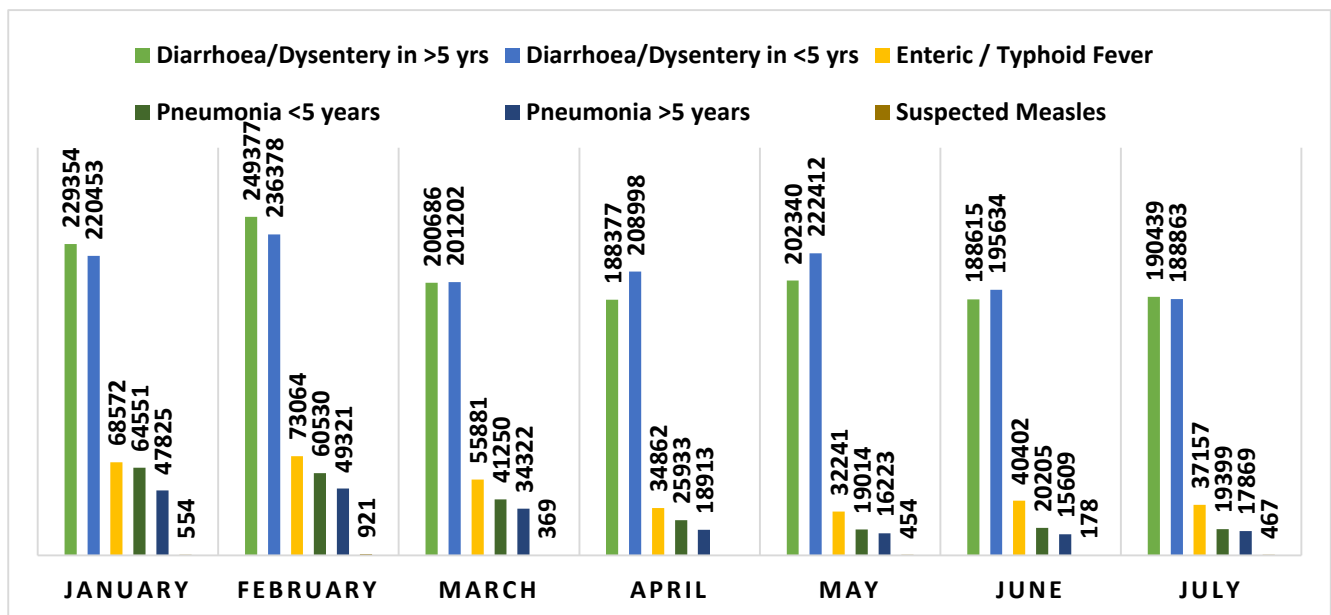


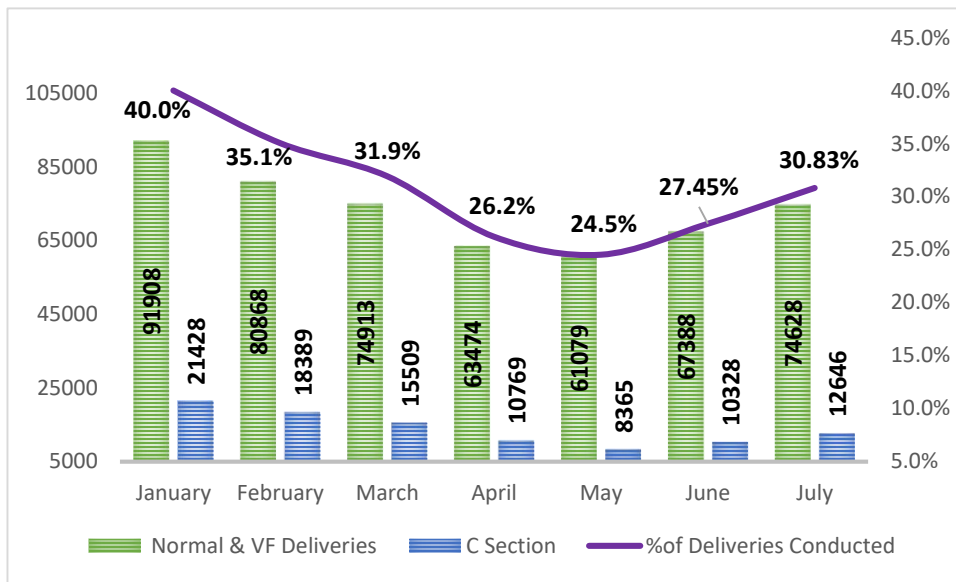
Figure shows the number of patients of top five epidemic diseases in Punjab Province for the month of January to July 2020. The highest number of patients were found in ARI-Acute (Upper) Respiratory Infections in all months. The reported number of patients in DHIS has also decreased due to pandemic COVID-19. A bit increase has observed in month of July 2020 in top five disease as compared to June 2020.

## SUSPECTED MEASLES, TYPHOID FEVER, DIARRHEA <5 & >5 YEARS & PHENOMENA >5 & <5 years



This graph compares number of patients for the month of July 2020 with two quarters of 2020 i.e. January to June 2020 for Suspected Measles, Typhoid Fever, Diarrhoea <5 & >5 years and Phenomena >5 & <5 years. The slight increase is observed in all diseases for the month of July 2020.

## MATERNAL AND NEONATAL CHILD HEALTH

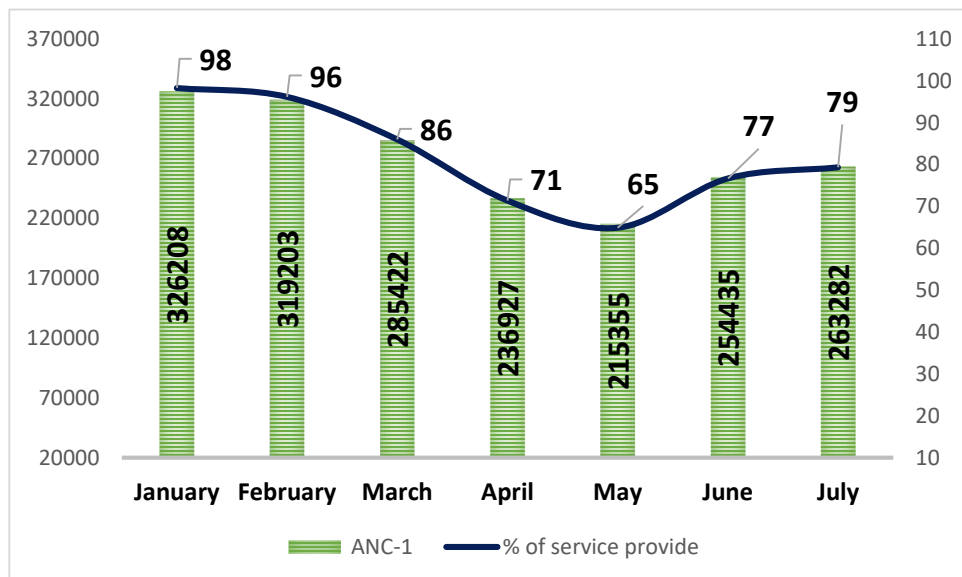


### Deliveries conducted in Health Facilities

The figure shows percentage of Total Deliveries conducted in Health Facilities of Punjab for the month of July 2020. Continues decline can be overserved till May 2020. Whereas, In June & July 2020 percentage of deliveries conducted in health facilities was 28% & 31% respectively. Difference of decline due to COVID impact

observed from January to May is 38%, an increase of 11% in Normal & Vacuum Forceps Deliveries from June to July was observed. The number of C-section performed were also analyzed and it was observed that the highest was in January i.e. 21K and lowest was observed in May i.e. 8K, whereas, in July 51.2% increase was observed as compared to May 2020.

## ANC VISITS

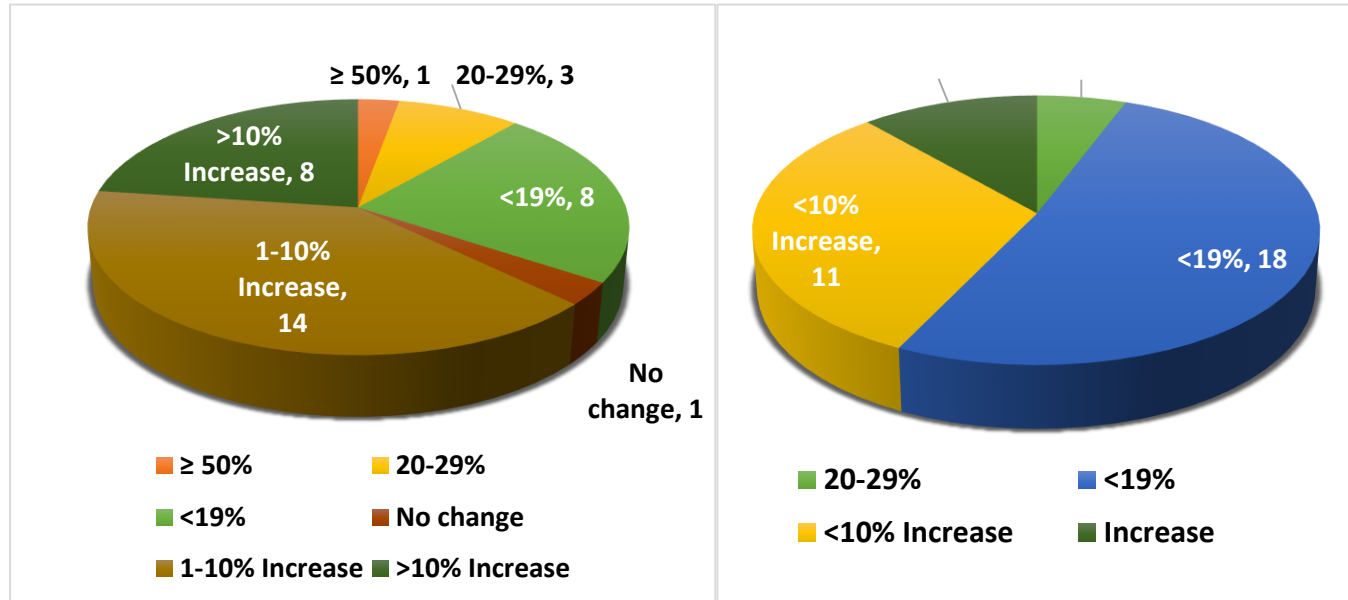


This numbers are calculated from the expected pregnancies during the year (3.4% of total Population).

90 above percentage can be seen through graph for the month of January & February. But in March there is 86%, as mentioned earlier that due to COVID-19 THOS (Teaching Hospitals) were closed by the

end of March, so directly ANC-I visits decreased and in May the percentage of ANC-I visits were 65%, whereas, in June ANC-1 visits are increased by 18% as compared to May 2020. A slight increase of 4% is observed in July as compared to June 2020.

## ANC-I & DELIVERIES DECLINE & INCREASE PERCENTAGE WITH NUMBERS OF DSTRICTS



Pie chart shows a decline percentage of Deliveries as compare to two quarters of year 2020, the total numbers of district in percentage categories are shown for the month of July 2020.

It was observed that 8 number of district's decline is in < 19% category and 14 districts shown increase percentage from 1 to 10 %.

Pie chart shows a decline percentage of ANC-I as compare to two quarters of year 2020, the total numbers of district in percentage categories are shown for the month of July 2020. It was observed that 18 districts have decreased ANC services and 11 district's increase is in < 10% category.

Deliveries Percentage Decline for the month of July 2020		
Category	Number of Districts	Name of District
≥ 50%	1	Rawalpindi
20-29%	3	Faisalabad, Gujranwala, Lahore
<19%	8	Bahawalpur, RY Khan, Gujrat, Narowal, Sialkot, MB DIN, Chakwal, Sahiwal
No change	1	Vehari
1-10% Increase	14	DG Khan, Rajanpur, TT Singh, Chiniot, Shiekhupura, Nankana Sahib, Khanewal, Multan, Jhelum, Bhakkar, Khushab, Sargodha, Pakpattan, Attock
>10% Increase	8	Bahawalnagar, Layyah, Muzaffargarh, Jhang, Hafizabad, Kasur, Lodhran, Mianwali
>50% Increase	1	Okara

ANC Services Percentage Decline for the month of July 2020		
Category	Number of Districts	Name of District
20-29%	2	Narowal, Pakpattan
<19%	18	Bahawalnagar, Bahawalpur, RYKhan, DG Khan, Layyah, Muzaffargarh, Rajanpur, Chiniot, Gujranwala, Lahore, Khanewal, Lodhran, Chakwal, Jhelum, Rawalpindi, Bhakkar, Sargodha, Okara
No Change	1	Vehari
<10% Increase	11	Faislabad, Jhang, TT Singh, Gujrat, Sialkot, MB Din, Sheikhpura, Nankana Sahib, Multan, Attock, Khushab,
Increase	4	Hafizabad, Kasur, Mianwali, Sahiwal

### FAMILY PLANNING VISITS

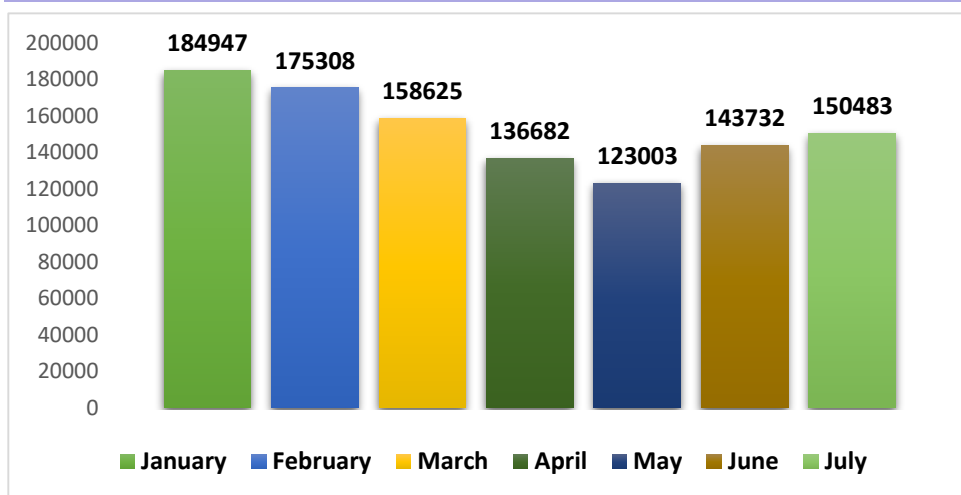


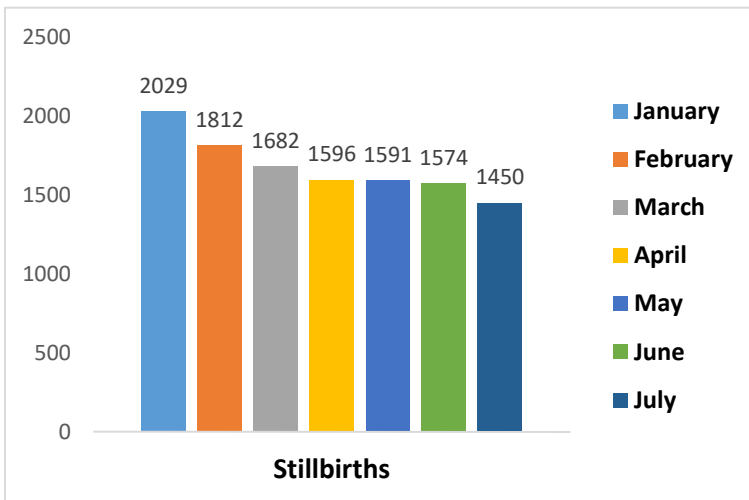
Figure shows a graphical representation of Family Planning visits for July 2020. There's continues decline in every next month from January to May. Number of family planning visits increase from June(143k) and in July 150K visits observed

that shows an increase of 5% as compared to June 2020.

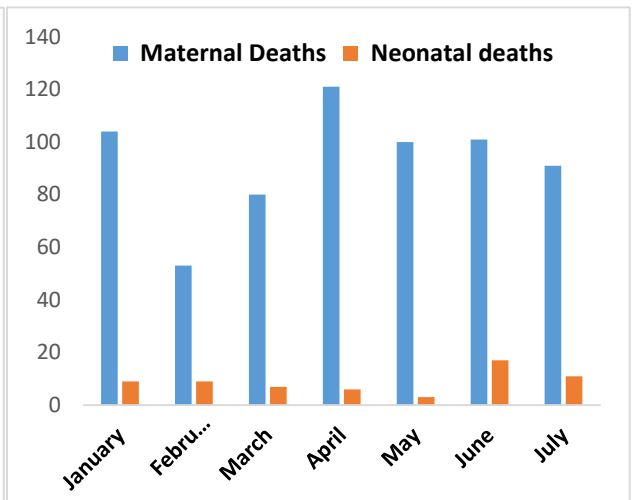
### OBSTETRIC COMPLICATIONS

	Puerperal Sepsis	Rupture Uterus	Prolonged / Obstructed Labour	Ectopic Pregnancies	Ante partum Hemorrhage (APH)	Complications of Abortion	Postpartum Hemorrhage (PPH)	Pre-Eclampsia / Eclampsia
January	351	378	594	357	1,759	1,269	1,031	1,172
February	129	533	462	327	1,451	1,393	1,406	1,110
March	84	144	437	229	1,074	839	832	661
April	90	77	343	165	1,557	690	603	551
May	44	201	278	134	616	736	550	524
June	54	69	258	131	870	687	688	787
July	184	96	313	154	1197	907	800	614

## STILL BIRTH, NEONATAL AND MATERNAL DEATHS



Graph shows a number of Still Births in all health facilities for the Month of January to July 2020. It is observed that the number of stillbirths have been decreased by 8% with respect to previous month (June).



Graph shows a number of Neonatal and Maternal Deaths reported in DHIS. The number of maternal deaths have increased in the Month of March & April and it ranked highest among past four months, whereas, in July there is decrease in maternal & neonatal deaths.

## STOCK OUT OF ESSENTIAL DRUGS

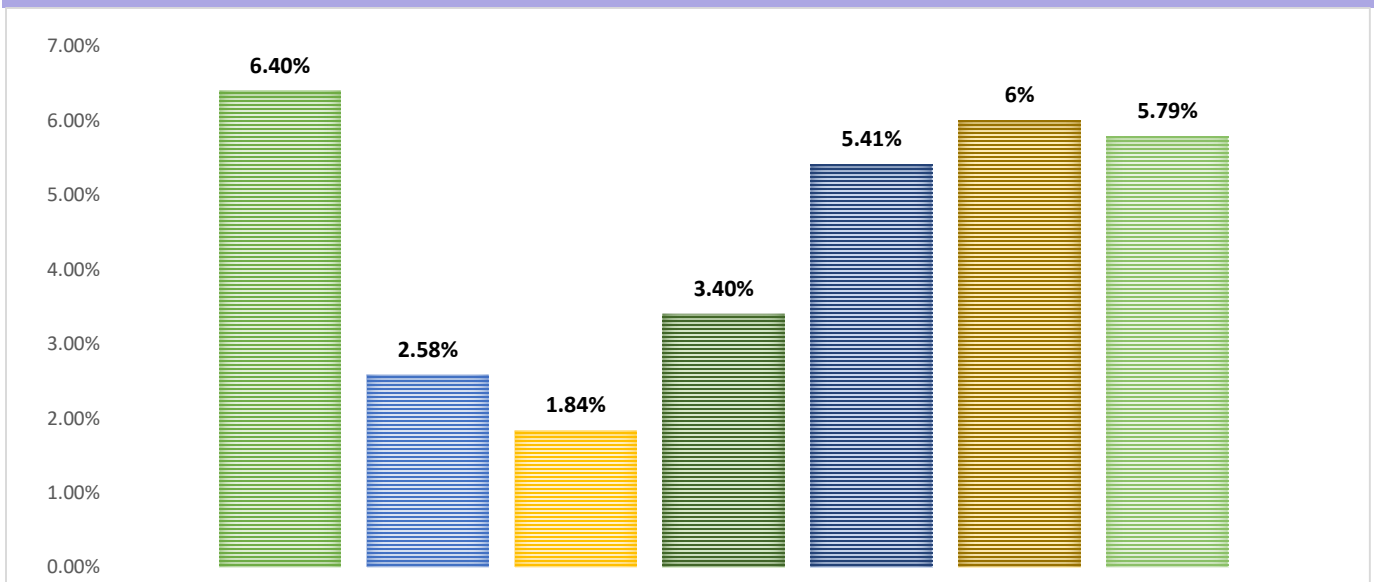
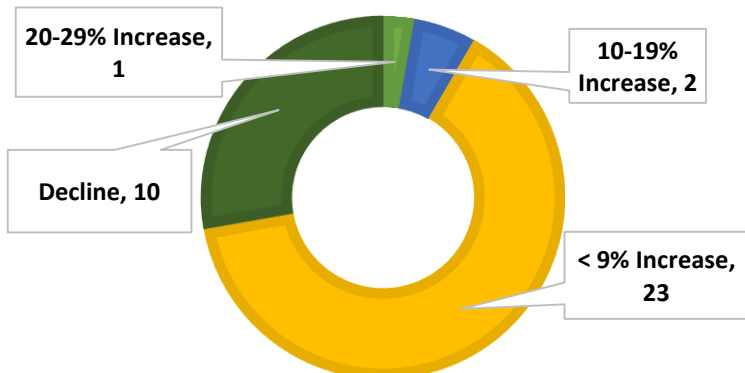


Figure shows a percentage of stock for the month of January, February, March, April, May, June & July 2020

## IMMUNIZATION COVERAGE

■ 20-29% Increase ■ 10-19% Increase ■ < 9% Increase ■ Decline



### BCG Vaccine

Figure shows a pie chart of BCG (Bacille Calmette-Guerin, a vaccine for tuberculosis (TB) disease) with increase percentage & total number of Districts as compared with June 2020. It was observed that 10 district fall in decline category. The highest percentage of increase was observed in the category of <9% with number of 23 Districts for the month of July 2020.

Category Percentage	No of Districts	Name of Districts
20-29% Increase	1	Sialkot
10-19% Increase	2	Faisalabad, TT Singh
< 9% Increase	23	Rawalpindi, Chakwal, Gujranwala, Hafizabad, MB Din, Narowal, Lahore, SKP, Nankana, Multan, Lodhran, Vehari, Okara, Jhang, Chiniot, Sargodha, Mianwali, Bhakkar, MZG, Layyah, Bahawalpur, Bahawalnagar, RY Khan
Decline	10	Attock, Jhelum, Gujrat, Kasur, Khanewal, Sahiwal, Pakpattan, Khushab, DG Khan, Rajanpur

### Measle I

■ >50% Increase ■ 30-49% Increase ■ 20-29% Increase  
 ■ 10-19% Increase ■ < 9% Increase ■ Decline

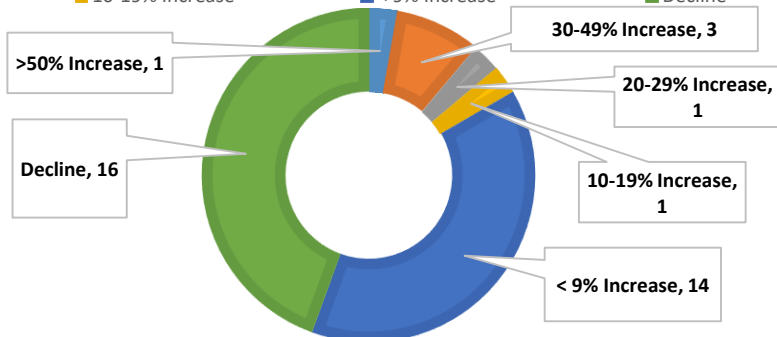
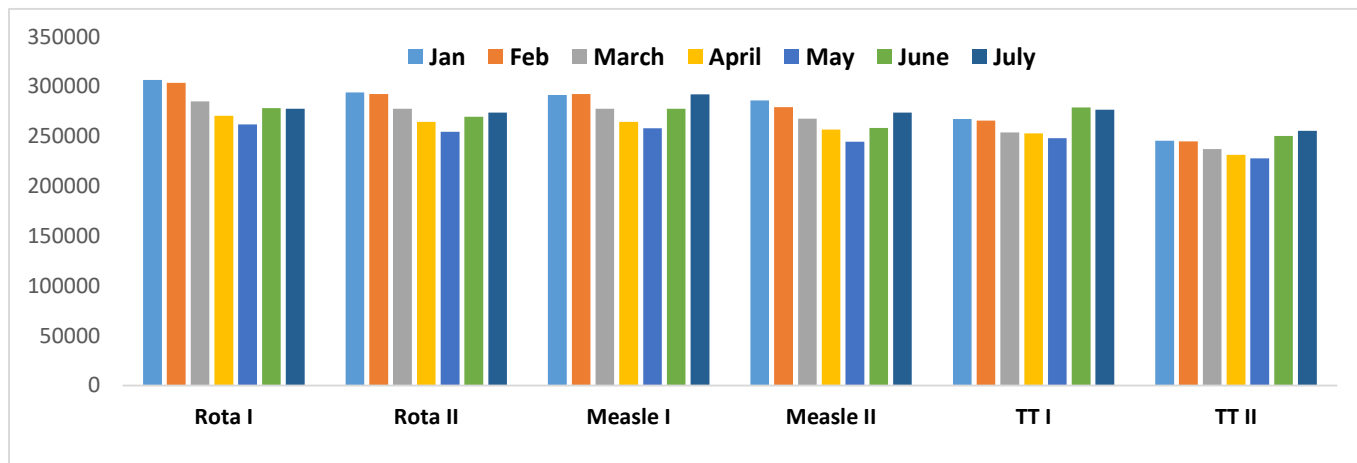


Figure shows a pie chart of Measle 1 vaccine with increase percentage & total number of Districts as compared with June 2020. It was observed that 16 districts fall in decline category. The highest percentage of increase was observed in the category of <9% with number of 14 Districts for the month of July 2020.

Category Percentage	No of Districts	Name of Districts
>50% Increase	1	Jhang
30-49% Increase	3	Faisalabad, TT Singh, Mianwali
20-29% Increase	1	Gujranwala
10-19% Increase	1	Sialkot,
< 9% Increase	14	Attock, Hafizbad, Gujrat, Narowal, SKP, Nankana, Multan, Sahiwal, Chiniot, Sargodha, Bhakkar, Rajanpur, Layyah, RY Khan
Decline	16	Rawalpindi, Chakwal, Jhelum, MBDIN, Lahore, Kasur, Lodhran, Khanewal, Vehari, Okara, Pakpattan, Khushab, DG Khan, MZG, Bahawalpur, Bahawalnagar

The below graph shows coverage of vaccines for the Month of January, February, March, April, May June and July 2020. There is no major difference observed in vaccination coverage of Rota and TT, whereas, there is a slight increase in Measle Coverage for the month of July2020.



In Punjab, for the month of July Rota-I and TT-I have decrease percentage of 0.2% and 1% respectively, Rota II , Measles-I and Measles-II and TT-II have increase of 1.6 %, 5.2%, 6% and 2% respectively as compared to June 2020, also shown in table.

Vaccine	Percentage Increase/ Decrease (%)
Rota I	0.2
Rota II	-1.6
Measle I	-5.2
Measle II	-5.9
TT I	0.8
TT II	-1.9

This Report would not be possible without the collaboration, guidance, and expertise of Dr. Haroon Jahangir Khan (Director General Health Services Punjab), Dr. Sohail Arshad Rana (DHS MIS), Dr. Imtiaz Ahmed Rana (ADHS-Stat).

The regularly reviews, discussion, and modification of methodological framework used to ensure that the Report meets the most rigorous statistical standards and accurately reflects the state of our Provincial health.

On behalf of MIS team, Mr. Farooq Ahmed (CPO), Ms. Aleena Tahir (Bio Statistician), we thank to the focal persons of Districts and public health professionals who worked to improve our provincial health for their tireless efforts with timely collaboration. We are better prepared to address the public health challenges of today and tomorrow. They deserve our deepest appreciation.





